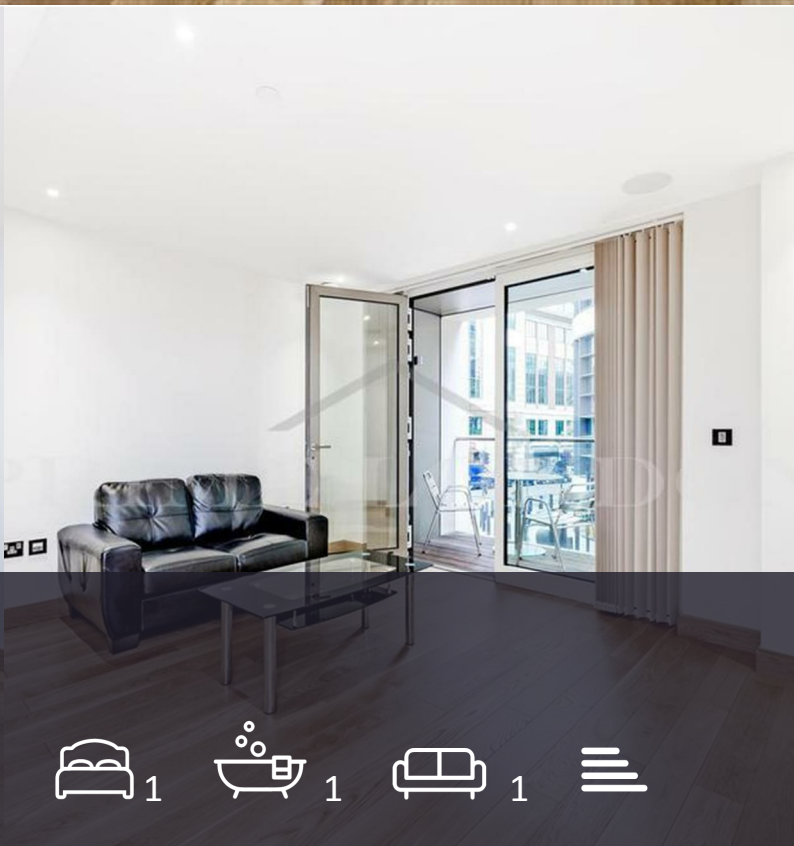




The Courthouse

70 Horseferry Road, Westminster, SW1P 2DU

Asking Price £880,000



1



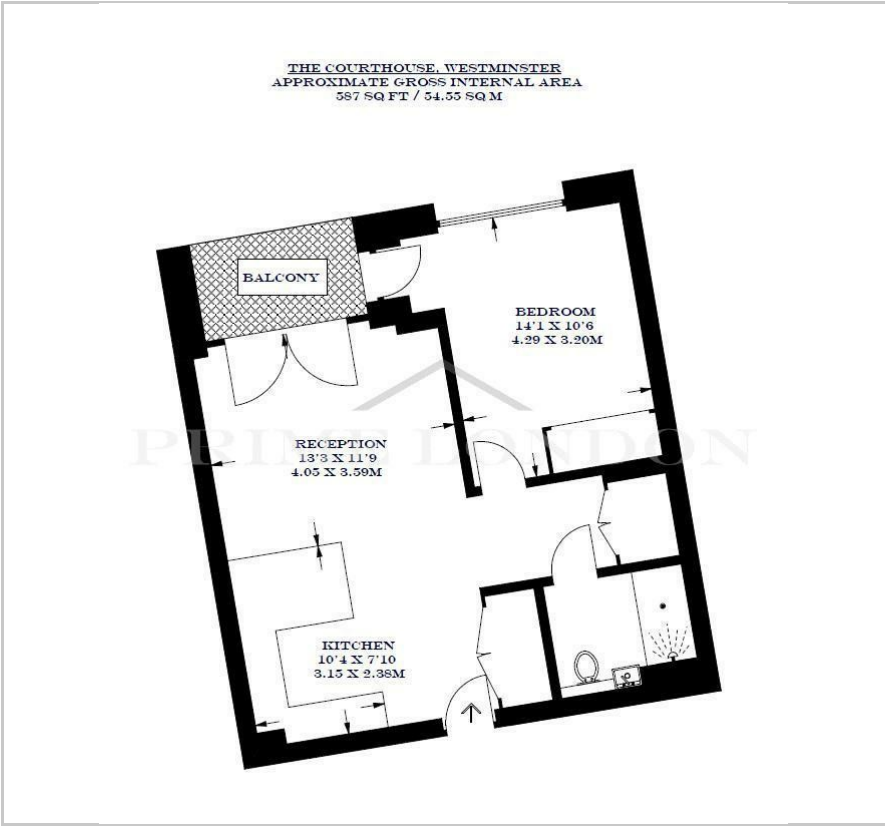
1



1



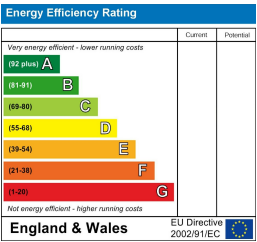
Floor Plan



Area Map



Energy Efficiency Graph



Viewing

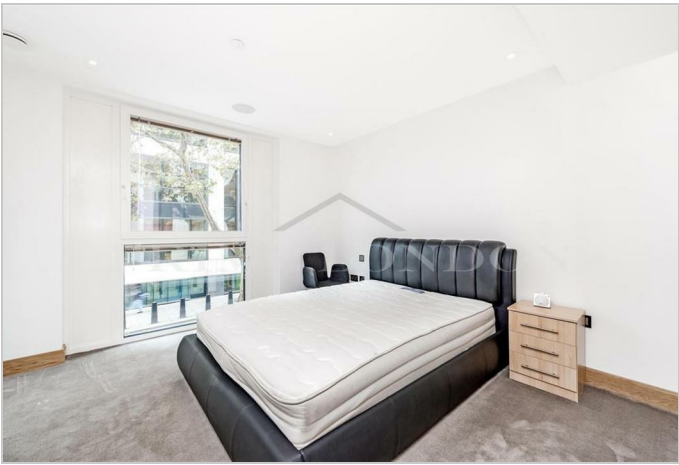
By appointment. Contact us on 0207 052 1075 if you wish to arrange a viewing appointment for this property, or require further information.

- Excellent and luxurious ■ 587 sq ft (54.55 sq m) apartment
- Private balcony
- Landscaped gardens and a resident's fitness centre
- Underfloor heating, comfort ■ 24 hour concierge service cooling and recessed lighting

This excellent and luxurious apartment of 587 sq ft (54.55 sq m), is available for chain free in the prestigious development 'The Courthouse', through Prime London.

The property features a sizeable reception with access to balcony, double bedroom, separate bathroom and utility cupboard. Apartments feature fully integrated appliances, high specification 'walk in' shower suite, underfloor heating, comfort cooling and recessed lighting.

This exciting new addition to Westminster features a concierge service, landscaped gardens and a resident's fitness centre, making this the ideal home or London base.



These particulars, whilst believed to be accurate are set out as a general outline only for guidance and do not constitute any part of an offer or contract. Intending purchasers should not rely on them as statements of representation of fact, but must satisfy themselves by inspection or otherwise as to their accuracy. No person in this firm's employment has the authority to make or give any representation or warranty in respect of the property.